

CULTURE EAST SIDE GALLERY

The Port of Strasbourg is stretching its walls, which are so many empty canvases on which artists, mysterious and brilliant, project their ideal vision of the world.



TOURISM STRASBOURG SEEN FROM THE WATER

Each year, more than **750,000** visitors, from Strasbourg, but especially from elsewhere, board one of the 10 Batorama pleasure boats and discover the city along the River Ill.

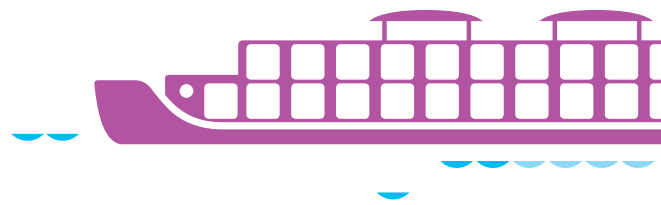
750 000
BATORAMA
PASSENGERS

THEY WANT TO SEE STRASBOURG

Every year, **1,500** cruise ships dock on the banks of the Rhine and the Strasbourg canals.

The Port of Strasbourg opens the city to the world so that it always remains faithful to itself, welcoming, alive and cosmopolitan.

Today, Strasbourg is known round the world through the experiences of some **220,000** Rhine travellers who visit every year. And their stories have not finished stirring up the curiosity of future passengers.



HISTORY A BRIEF HISTORY OF A LARGE PORT

Strasbourg was built away from the Rhine, whose waters only attracted floods and invasions. Sheltered from the river, the city and its port grew on the River Ill. For centuries, Strasbourg natives lived with the water.

At the dawn of the 20th century, Strasbourg had big plans and the port could not contain its ambitions. Driven by its aspirations, the city built the port on the banks of the Rhine. Far from the heart of the city, hidden, it gradually disappeared from the life of Strasbourg's residents.

Strasbourg today has grown outside its centre to include the port. Strasbourg natives observe, explore and live with it, returning to their history. At the edge of the Bassin du Commerce, you just have to look around to see that the whole city is there: historic, strong, inspiring, European and open to the world.



THIRD CENTURY **1331** **1882** **1926** **1947** **1969** **2018** **2020**

Trading by the Romans. They build two merchant ports on the River Ill.

Founding of the Corporation de l'Ancre. The prosperous city and the boatmen will soon have the monopoly of trade on the Rhine.

The port is located outside the city centre. The Bassin de l'Hôpital accommodates the Marne-Rhine Canal barges.

Strasbourg expands to the Rhine, the port has already left the River Ill and the Port autonome de Strasbourg is founded.

The first pleasure boats sail on the River Ill, marking the beginning of the port's tourist services that will become Batorama.

The Port of Strasbourg inaugurates its first container terminal in the southern area along with its first gantry crane.

R3FLEX is commissioned at the Lauterbourg port site. It is the first terminal inaugurated in more than 15 years along the upper Rhine.

A new horizon is emerging for the Port of Strasbourg. The administration leaves Rue de la Nuée Bleue to be at the centre of the port's activities.

Photos de nos sites — Design: Joli Rouge / © Jean-Val — Photo credits: Bismuth Samanski, 2016/17 / Cécile Barret / L&C Châmaudier / Fotostock, Zuerden



PAS
PORT AUTONOME DE STRASBOURG

STRASBOURG BY THE SEA

FROM THE HARBOUR MASTER'S OFFICE, THE HORIZON WIDENS ON THE OPEN SEA.

The lapping of the water and the eddies on the basin announce the docking of a container ship. A fog horn sounds, an engine roars and a cruise ship leaves the port.

At the edge of the water, the fresh air and the cries of a few seagulls provide further scenery. For a minute, we lose our bearings, but not far from there, the cathedral still watches.

WELCOME TO STRASBOURG BY THE SEA



MARITIME RANGE OF THE GRAND EST REGION, THE PORT OF STRASBOURG IS A GATEWAY FOR GOODS AND RESOURCES.

Built to the east of the city, it plays a major role in regional development. At the crossroads of Europe, it is a gateway to trade and growth. A catalyst for innovation, it is a source of solutions for business development. The Port of Strasbourg creates new horizons! It combines the intelligence of an industrial and logistical community with the city's optimism to reinvent itself and spread its energy.



ONE RIVER CONVOY =
220 FEWER LORRIES
ON THE ROAD

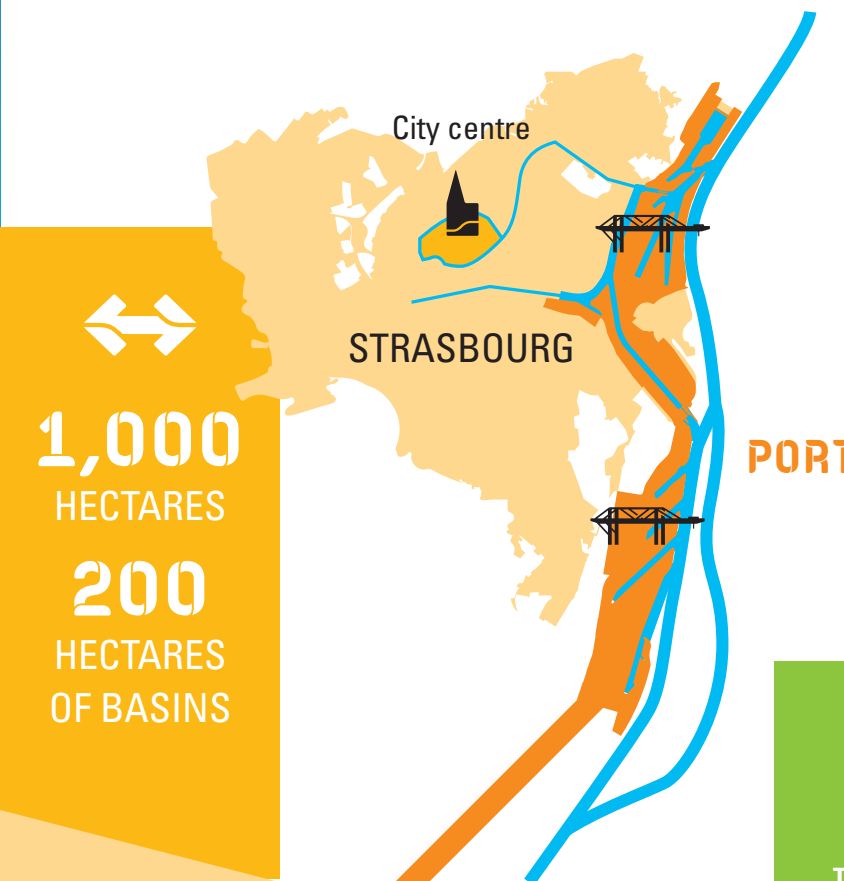
SPORTS
TETRIS®,
A NEW CHAMPION!

With more than 400,000 containers handled in a year, RET remains the leading terminal operator in France.



40T

1 REACH STACKER
LIFTS THE WEIGHT
OF 9 ELEPHANTS



1,000
HECTARES
200
HECTARES
OF BASINS

16
REACH STACKERS

TEU
= TWENTY-FOOT
(CONTAINER)
EQUIVALENT UNIT

BUSINESS ACTIVITY IN STRASBOURG, EVERYTHING GOES THROUGH THE PORT!

Drink an espresso on a terrace, pick up a parcel at the Post Office, refuel your car or connect to a website: 4 daily actions that seem to have nothing in common, except that they are quite normal. And yet...

Without us realizing it, the port supplies our daily lives. With all the objects that surround us, it is difficult to know which ones were manufactured or came through the port, since there are so many of them.

3 CONTAINER TERMINALS
STRASBOURG NORTH & SOUTH, R3FLEX IN LAUTERBOURG

4 PORT SITES
STRASBOURG LAUTERBOURG MARCKOLSHEIM BEINHEIM

~ 100 KM OF RIVER FRONT

2ND INLAND PORT IN FRANCE

400 COMPANIES WITHIN THE PORT COMMUNITY

100 KM OF RAIL

THE GROUP THE THREE FACETS OF THE PORT

GROUPE PAS BATORAMA RET

PORT AUTONOME DE STRASBOURG

PAS PORT AUTONOME DE STRASBOURG

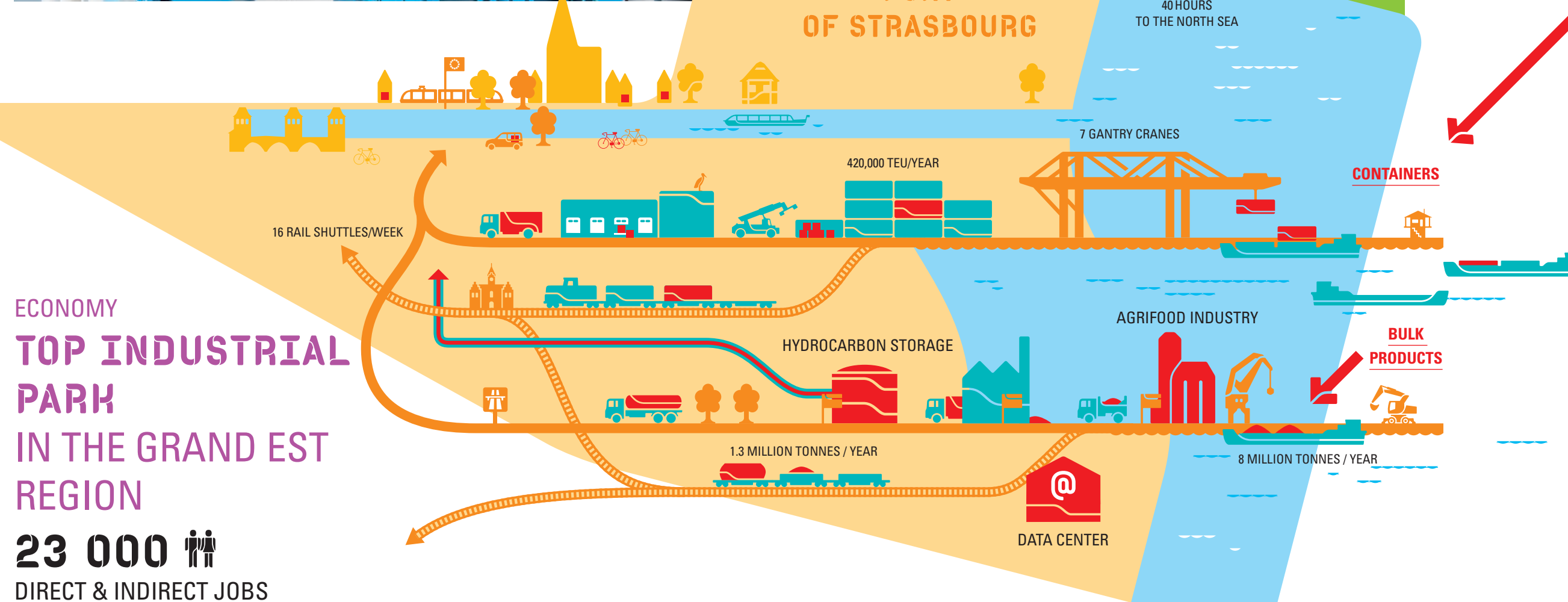
The Port of Strasbourg is a public institution of administrative nature which builds and maintains the river and rail infrastructure. It is also responsible for providing land in the port area to businesses.

RET RHINE EUROPE TERMINALS

Rhine Europe Terminals (RET) oversees port handling.

BATORAMA BATEAUX PROMENADES

Batorama welcomes tourists on board its boats to discover Strasbourg.



ECONOMY
TOP INDUSTRIAL PARK
IN THE GRAND EST REGION

23 000 DIRECT & INDIRECT JOBS
generated by the Strasbourg port area.



STRASBOURG BY THE SEA



ENVIRONMENT
INDUSTRIAL ECOLOGY
IN THREE ACTS

MORE THAN A DOZEN SYNERGIES

CLES is a project that works to create new environmental, economic and social dynamics. It is a cycle of collective intelligence of the Port of Strasbourg in three acts which today represents:

3,500 TONNES OF CO2 EQUIVALENT AVOIDED PER YEAR

SHARE waste management, purchasing and service provision

LOCATE equipment, infrastructure and human resources among neighbours

FIND resources nearby

€220,000 IN SAVINGS ANNUALLY