

WHY CHOOSE THE PORT OF STRASBOURG AND MULTI-MODAL TRANSPORT?

FLEXIBILITY

The River Rhine is accessible 24/7 and coupled with regular rail links to ensure the continuous high-volume transport of goods.

RESPECT FOR THE ENVIRONMENT

A river shipment can carry up to the equivalent of 220 trucks, thereby reducing the number of vehicles on the roads.

RELIABILITY

River and rail enable the high-volume transport of bulk goods, circumventing the vagaries of road congestion. Large maritime ports favour these modes of transport to relieve traffic on major roads.

PORT OF THE FUTURE

Ports de Strasbourg has undergone a full-scale digital transformation in recent years.

We have developed a new online tool to improve our multi-modal services, streamline traffic flows on our various sites, and facilitate multi-bulk transport.

We give carriers, freight forwarders and logistics providers access to VIGIE, our online platform for managing port dues.

CONTACTS

PORTS DE STRASBOURG

1 rue du Port du Rhin – CS 80407
67002 Strasbourg Cedex – France
Phone: +33 (0)3 88 21 74 74
pas@strasbourg.port.fr
www.strasbourg.port.fr

TRANSPORT TO STRASBOURG :
MTS Manutention Transport Service
7 Rue de Dunkerque – BP 88
67016 STRASBOURG Cedex
Phone: +33 (0)3 90 41 05 00
info@mts-strasbourg.fr

SAPPE
2 rue de Sète
67100 Strasbourg – France
Phone: +33 (0)3 88 83 48 06
sappe@sappe-alsace.fr

**TRANSPORT TO LAUTERBOURG
OR DALHUNDEN :**
RET Rhine Europe Terminals
Secteur D – 20 rue de Saint-Nazaire
67100 Strasbourg – France
Phone: +33 (0)3 88 65 80 80
info@ret-strasbourg.com
www.rhine-europe-terminals.com

TRANSPORT TO LAUTERBOURG :
LINGENHELD ENVIRONNEMENT
1 place Henri Levy
67000 Strasbourg – France
ACPMC
7 rue de Dunkerque
67000 Strasbourg – France

PAS



PORTS DE STRASBOURG



MULTI-MODAL TRANSPORT BULK

PORTS DE STRASBOURG IS A MULTI-MODAL SPACE FOR MULTI-BULK GOODS, THE ENTRY POINT FOR GOODS TO SUPPLY THE REGION AND A PREFERRED EXPORT SITE FOR THE HIGH-VOLUME TRANSPORT OF BULK GOODS.



2ND

INLAND PORT
IN FRANCE



40
HOURS

TO ANTWERP
AND ROTTERDAM



3

MULTI-BULK
UNLOADING SITES



7

MILLION TONNES OF
BULK HANDLED BY
INLAND WATERWAYS



1.3

MILLION TONNES
HANDLED
BY RAIL

PAS

PORTS DE STRASBOURG



TRI-MODAL TRANSPORT: THE PORT OF STRASBOURG'S 3 RS

Ports de Strasbourg enjoys exceptional transport links. Carriers are assured of smooth transportation and transshipment of bulk goods between various modes of transport.



RHINE

THE RHINE IS EUROPE'S MAIN RIVER TRADE ROUTE. All of the Port of Strasbourg's sites are directly connected to the river. Our sites' infrastructures ensure efficient modal shift.



ROAD

EACH OF THE PORT OF Strasbourg's terminals has easy access to the French and German motorway networks:

THE RHINE VALLEY

VIA THE A35

PARIS VIA THE A4

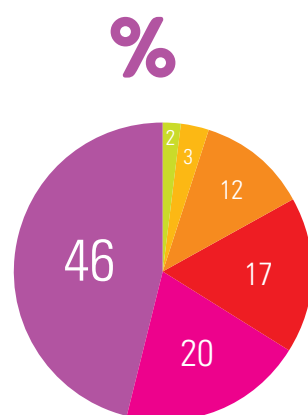
FRANKFURT VIA THE A5



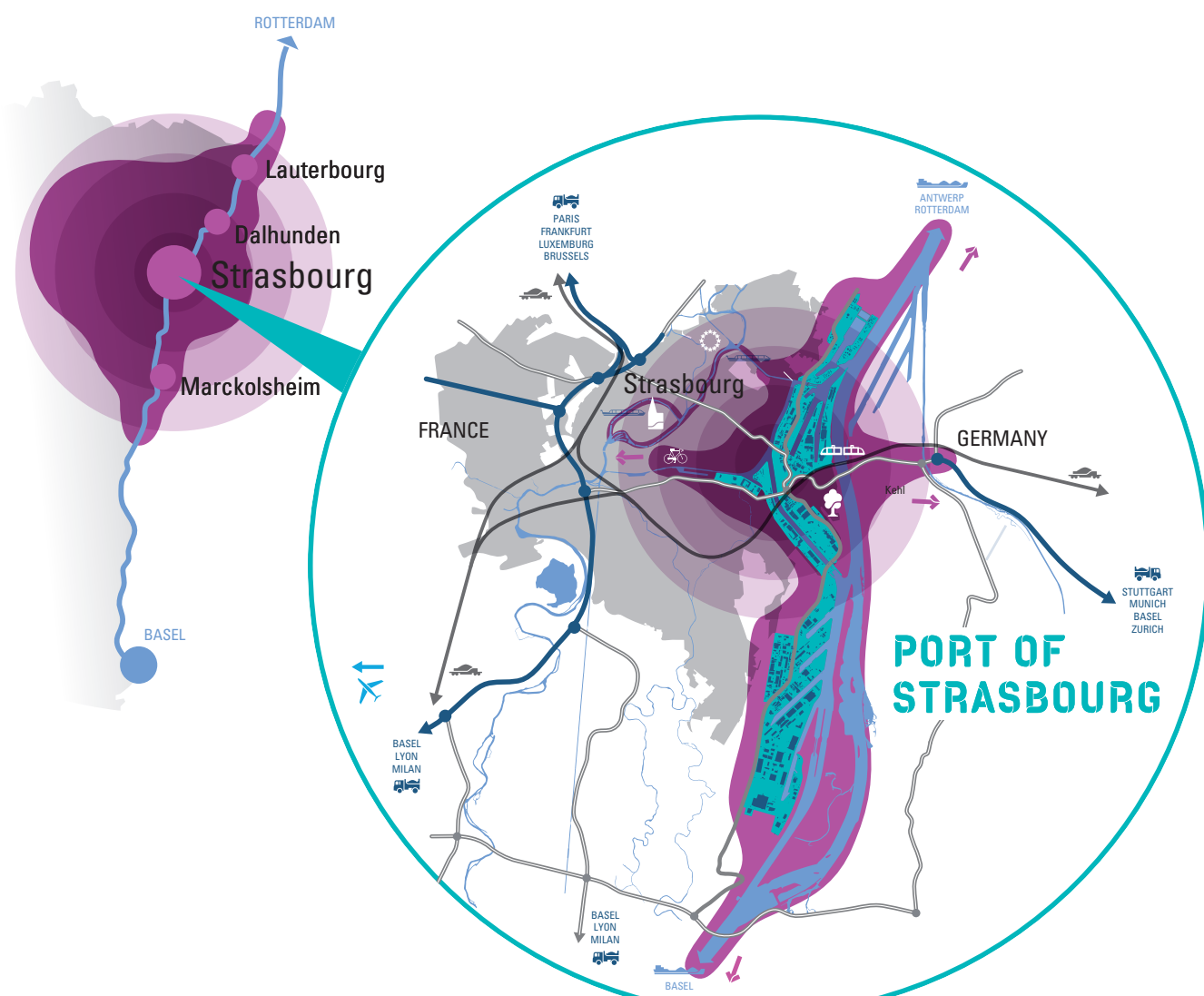
RAIL

THE PORT OF STRASBOURG HAS 100 KM OF RAILWAY, linking directly to the national network. Nearly 1,500 trains per year dispatch and deliver bulk goods to and from the port

TYPES OF GOODS
AT THE PORT
OF STRASBOURG



- Other products
- Fertilisers & chemicals
- Packaging & manufactured goods
- Energy products
- Agri-food & forestry products
- Building materials



OUR LOGISTICS CLUSTER FOR BULK BATCHES

The Port of Strasbourg has **5 sites** dedicated to bulk transport: 2 at Strasbourg, 2 at Lauterbourg and 1 at Dalhunden.



LAUTERBOURG

The site at Lauterbourg has a **bulk handling wharf** bringing together all the services necessary for the **transshipment and handling** of bulk goods.

→ **1 material handler**

This new platform is exceptionally well-located:

→ **A direct link to the ports of Rotterdam and Antwerp with no canal locks**

→ **Access to the motorway network, with no need to cross any busy urban areas**

DALHUNDEN

This port is used for free-flowing food and non-food bulk products (grains, sand, etc.)

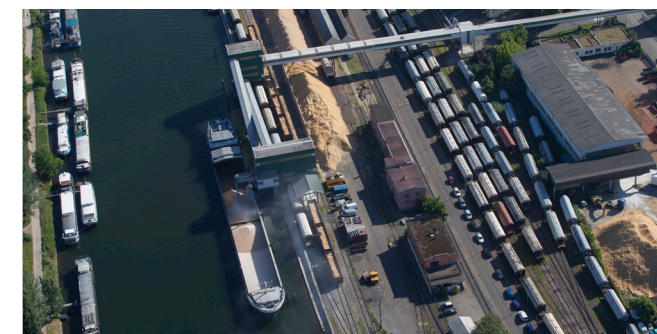
→ **a 200-metre river wharf**

→ **a 250 tph conveyor**



WITHIN THE PORT,

you have access to our logistics cluster's many services, which are provided by Manutention Transport Services SAPPE, ACPMC and LINGENHELD ENVIRONNEMENT.



Specialised in multi-bulk, MTS, is a **tri-modal platform** (rail, river and road) with the skills and equipment required for the handling, transshipment and on-site storage of goods:

→ **Locomotive fuelling**

→ **1 river wharve 110 metres**

→ **4 km of on-site rail track**



LINGENHELD ENVIRONNEMENT

→ **1 river wharve 135 metres**



ACPMC Bulk handling in Lauterbourg



SAPPE is a **bi-modal platform** enabling the storage and river/road handling of bulk products at Strasbourg and Lauterbourg.

The company offers **handling and rail haulage services at connected sites** as well as handling of all types of bulk and packaged materials (wire reels, sheet piling, wood pellets and logs, pallets of various materials, waste, etc.).