

| 3 | LIVING IN  
STRASBOURG

| 2 | THE PORT  
FOR DEVELOPMENT

| 1 | THE PORT  
FOR TRANSPORT

PAS

PORT AUTONOME DE STRASBOURG

# SETTING UP IN STRAS BOURG



# THE

PORT AREAS IN THE HEART  
OF THE UPPER RHINE REGION  
OFFER A WEALTH OF ECONOMIC  
OPPORTUNITIES FOR INDUSTRIAL AND LOGISTICS  
ACTIVITIES.

Choosing the Port of Strasbourg means grasping the opportunity to develop in the heart of a dynamic, cross-border region where markets converge. It also means integrating an ecosystem that brings together the resources and services required to grow your business.

Choosing to live in Strasbourg means embracing the optimism of a friendly city that is a great place to live.

Choosing Strasbourg as a transport hub means trading with the world via Europe's major seaports, just a few hours' away by rail or the Rhine.

Take a fresh look at the Port of Strasbourg. We'd be delighted to welcome you to our community.

JEAN-LOUIS JÉRÔME

Managing Director, Port Autonome de Strasbourg

| P. 20 LIVING IN  
STRASBOURG

| P. 12 THE PORT  
FOR DEVELOPMENT

| P. 6 THE PORT  
FOR TRANSPORT



The Port of Strasbourg, eastern France's interface with the sea, plays a key role in regional development. It comprises a host of facilities built on the Rhine to the east of the city since the early 20th century. The port is a real catalyst for innovation and fulfils a vital function in the transportation of goods and resources.

The Port of Strasbourg enjoys a status that is unique in France.

As a public body, it receives the support of local authorities and the French Government for its development, and yet it is financially autonomous, having its own funds to manage its operations and invest in its infrastructures.

As a gateway to Europe, Port of Strasbourg is an epicentre for exchanges, growth and interconnection.

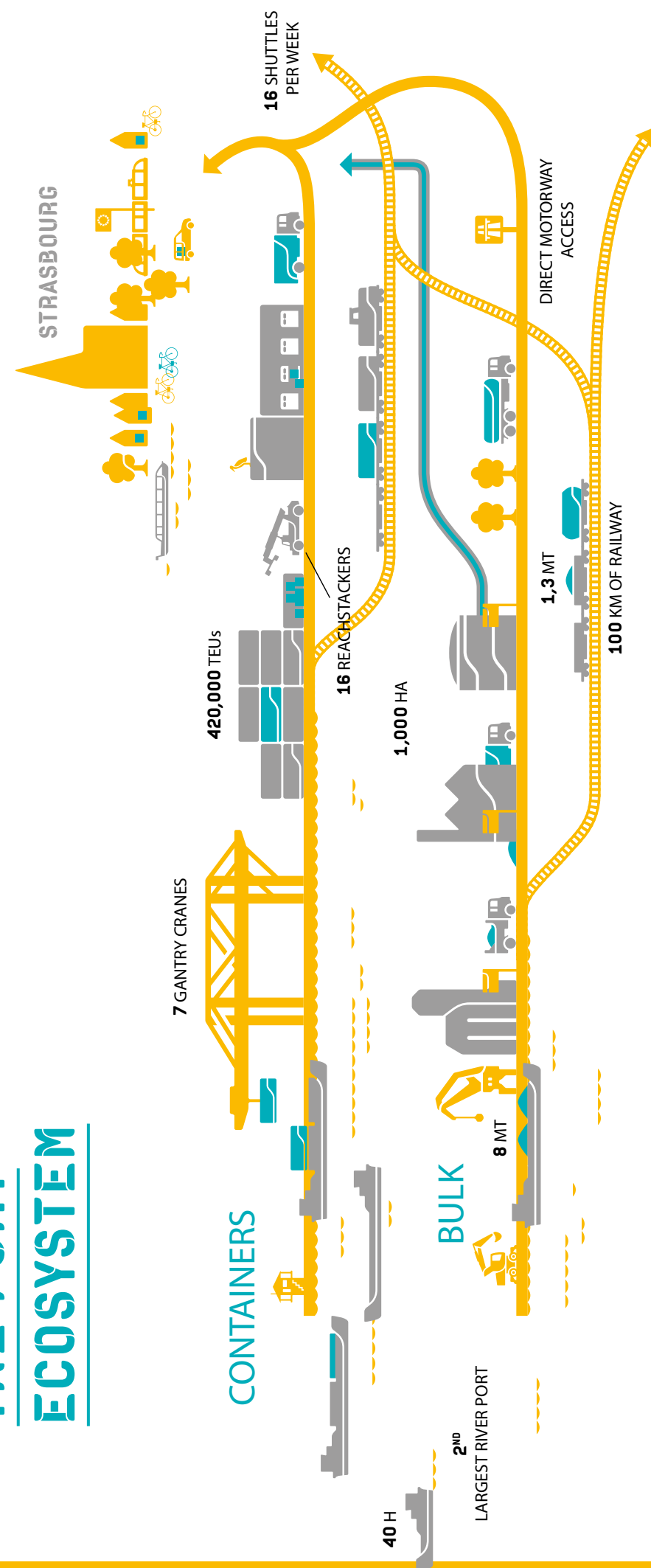
# WELCOME TO THE PORT OF STRASBOURG

## THE PHOENIX STRATEGY

The Port of Strasbourg is looking to strengthen its position as a key player in the economy and as a leading port authority while developing best practices.

Having long been assigned the role of operator, we are planning to orient our future strategy towards collaboration, innovation and preserving the environment.

## THE PORT ECOSYSTEM







# THE PORT FOR TRANSPORT



THE PORT OF STRASBOURG IS REINVENTING MULTIMODAL TRANSPORT. NEW TECHNOLOGIES ARE BOLSTERING EXISTING MODES TO EXPAND THE SERVICE OFFER.



**8,000,000**

TONNES PER YEAR



**5,000**

CALLS PER YEAR



**200**

HECTARES  
OF DOCKS



**3**

CONTAINER  
TERMINALS

## THE HUB

### BY PORT OF STRASBOURG

The convergence of European trade routes and the concentration of transport infrastructures make the Port of Strasbourg a strategic multimodal platform.

This leading hub is ideally located for imports and exports via the major North Sea ports, and the distribution of merchandise throughout Europe.

## THE 3 R

### RHINE

Vessels depart to and arrive from the major Rhine and North Sea ports every day:

STRASBOURG ↔ ANTWERP / ROTTERDAM:

40<sup>H</sup> STEAMING TIME

### RAIL

Shuttles use the 100 km of track connected to the national rail system:

ROTTERDAM : 3 DEPARTURES PER WEEK

ANTWERP : 8 DEPARTURES PER WEEK

MARSEILLE & LE HAVRE : 5 DEPARTURES PER WEEK

### ROAD

Rapid links to the French and German motorway networks:

A35 ↔ RHINE VALLEY

A4 ↔ PARIS

A5 ↔ FRANKFURT

Special routes for the transit of heavy freight.

# SOLUTIONS FOR ALL YOUR TRANSPORT NEEDS

You will find the infrastructures, equipment and specialist freight handling and transportation operators you need at our sites.

Transporting bulk? Containers? Oversized freight?  
Whatever your merchandise, we study your multimodal transport requirements and put you in touch with our logistics partners.

## BULK

### 2 VESSEL LOADING DOCKS

#### MTS - MANUTENTION TRANSPORT SERVICE

7 rue de Dunkerque, Strasbourg  
+33 (0)3 90 41 05 00  
info@mts-strasbourg.fr

## CONTAINERS

### 3 TERMINALS

### 5 RIVER GANTRY CRANES

#### RET

20 rue de Saint-Nazaire, Strasbourg  
+33 (0)3 88 65 80 80  
info@ret-strasbourg.com

## HEAVY LIFT

### 1 HEAVY-LIFT

### (460T) GANTRY CRANE

### 1 STORAGE AND ASSEMBLY AREA

#### RET

20 rue de Saint-Nazaire, Strasbourg  
+33 (0)3 88 65 80 80  
info@ret-strasbourg.com

# PORT SERVICES FOR ROAD HAULIERS

A whole host of port services are available for the benefit of truck drivers:

- A 200-space HGV parking area with sanitary facilities
- A hotel
- A choice of restaurants
- A grocery store
- A fitness trail and a free outdoor gym nearby

HGV maintenance and servicing facilities are also provided:

- A vehicle test centre
- Several HGV fuel (including NGV) and washing stations



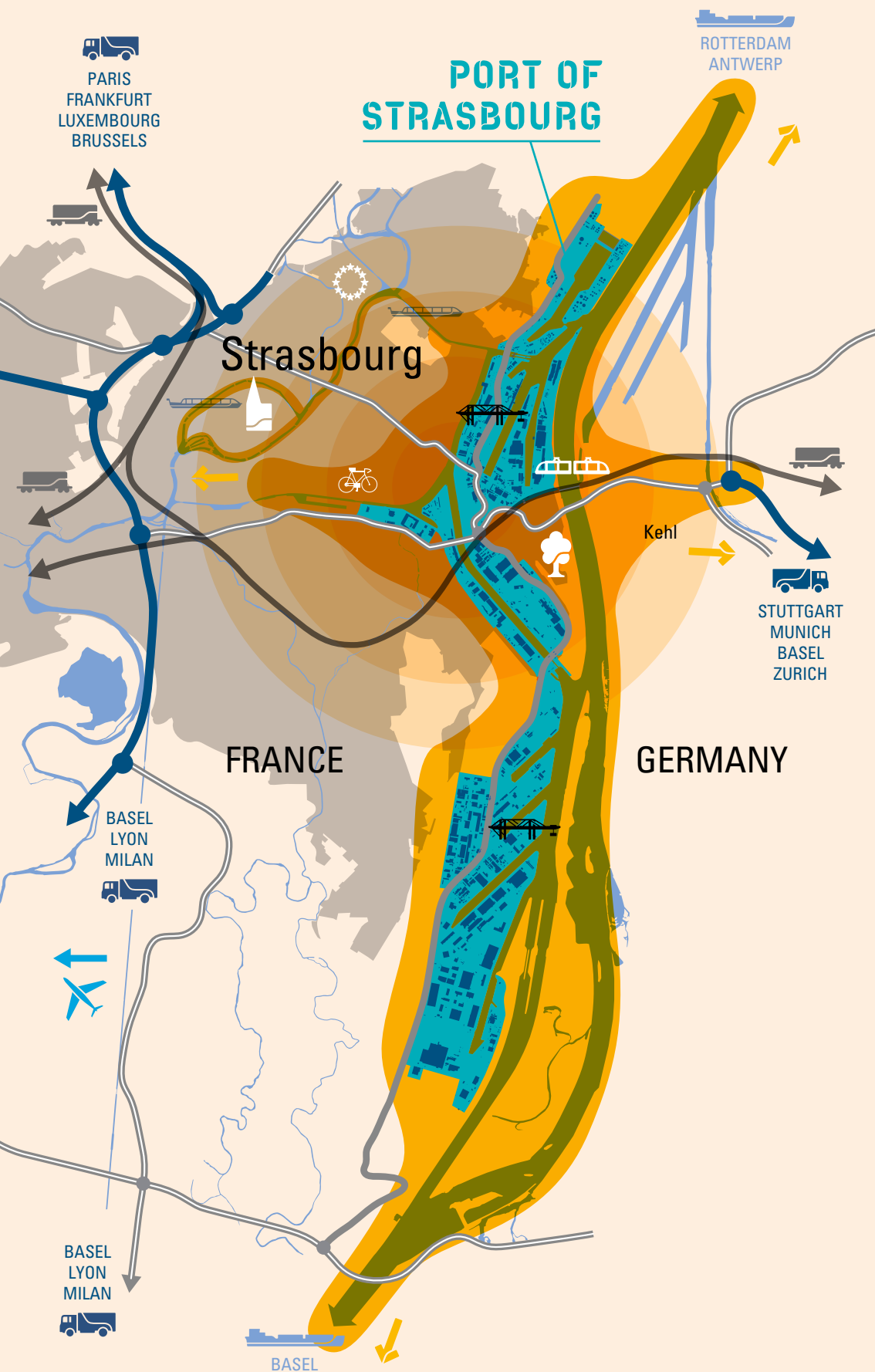




# THE PORT FOR DEVELOPMENT



THE PORT OF STRASBOURG IS MUCH MORE THAN JUST A TRADE HUB. IT ALSO ACCOMMODATES 400 COMPANIES WHO BENEFIT FROM A RANGE OF SERVICES SPECIALLY TAILORED TO BOOST DEVELOPMENT.



N°1

TRADE HUB IN FRANCE'S  
"GRAND EST" REGION



400

COMPANIES  
WITHIN THE PORT  
COMMUNITY



10,000

EMPLOYEES



>1000<sup>HA</sup>

ALONG THE RHINE



100<sup>KM</sup>

OF RHINE WATERFRONT  
FOR OUR SITES,  
INCLUDING STRASBOURG,  
LAUTERBOURG AND  
MARCKOLSHEIM

## NEW OPPORTUNITIES

In the Port of Strasbourg, pre-war industrial firms rub shoulders with young start-ups from the digital world. This has not come about by chance. Every business can find its place in an ecosystem where economic partners, logistics infrastructures and transport facilities abound.

This convergence of services generates a vibrancy that makes dockland property a highly attractive solution. We have buildings and land suited to the development of your activity at our Strasbourg, Lauterbourg and Marckolsheim sites.

## A PORT THAT IS A FACILITATOR TOO

We deal directly with companies looking to set up at one of the Port of Strasbourg sites.

We take time to study every project and to talk to the entrepreneurs to understand their business needs and foster healthy development.

- Need finance? We can introduce you to trusted lessors.
- Want to apply for a grant? We offer support in your dealings with ADIRA – the Alsace Development Agency – and local authorities.
- Does your activity require an operating licence? We can sit alongside you in your discussions with the relevant authorities (DREAL).
- Seeking a multimodal transport solution? We can put you in touch with rail or river transport companies, freight forwarders and logistics specialists.
- Does your project call for public infrastructures to be adapted to your needs? We study your application to upgrade existing facilities (rail network, wharf, roads).
- Looking to improve your processes? We develop synergies. We introduce you to potential partners with a view to sharing equipment or resources and making savings on materials.

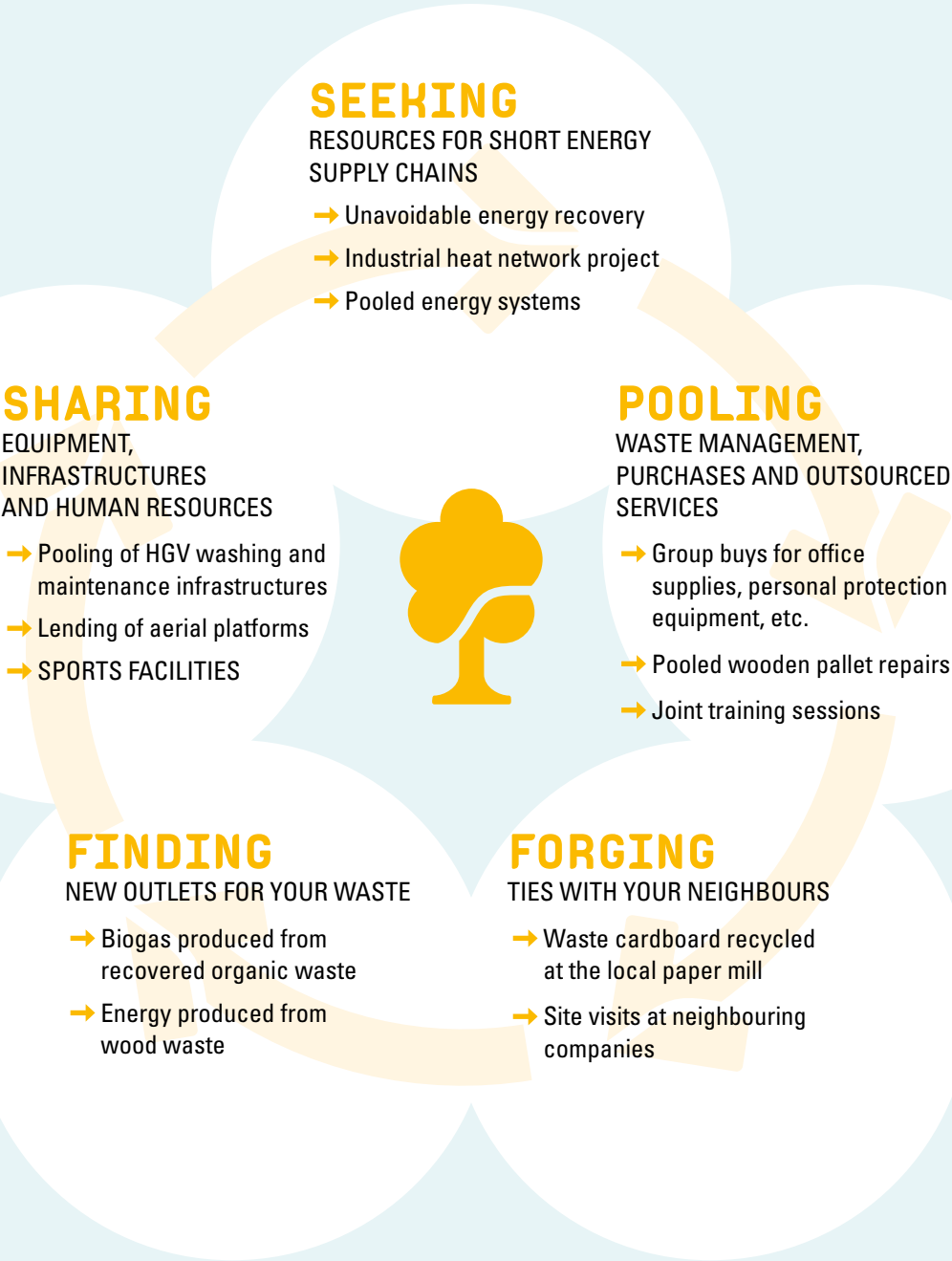
Facilitating means being by your side. It means offering you support every step of the way to get you off to a successful start.

14/15



# THE ECOSYSTEM

The Port of Strasbourg stimulates collective intelligence to encourage companies to work together. Alongside Strasbourg Eurométropole, the Grand Est regional council, ADEME and the Port Users’ Group, we have developed CLES, a project set up to generate new economic, societal and environment impetus.



# THE PORT COMMUNITY

## THE PORT WORKING FOR BUSINESS

Valport is a project to renovate and develop the port area in response to business needs. Security, accessibility, attractiveness and comfort are the driving forces behind it.

The port is a hub of exchange. People live here, work here and commute here. Our role also involves continually enhancing the quality of the public spaces, for you, your employees and your customers.

## THE PORT WORKING FOR THE WORKFORCE

The port community is made up of businesses, and therefore their employees. Every day, 10,000 people come to work in the port area. We have therefore implemented the PEPS commuting plan to help them get around and to encourage new mobility solutions by

- Creating cycle lanes
- Adapting public transport routes
- Promoting car pooling
- Developing new forms of active mobility

Forging a community involves developing social ties between the port’ users. The Port of Strasbourg urges companies to pool the services offered to employees and to share human resources. The port’s sports clubs, multi-company restaurants and talks by experts offer countless opportunities to meet and exchange.

## BUSINESS WORKING FOR BUSINESS

A collective spirit has always been firmly anchored in the port’s mindset.

Businesses have now come together around common interests to form the Port Users’ Group (GUP).

The GUP forms a solid community of 100 companies who speak with one strong voice to get their message across.

The GUP REPRESENTS member companies in dealings with public institutions.

The GUP PROMOTES the community’s disciplines and expertise throughout the area.

The GUP INSTIGATES “pooling” operations between companies.

Your economic performance is your priority, and also our concern. The GUP has your interests at heart.

**CONTACT :** [gup@strasbourg.port.fr](mailto:gup@strasbourg.port.fr)

# THE 400 PORT FIRMS INCLUDE

ALGECO — BLUE PAPER — COMPTOIR AGRICOLE  
DE HOCHFELDEN — CROISIEUROPE — DB SCHENKER —  
ESCAL — GEFCO — GEODIS — LOXAM — NLMK —  
OVH — PRODAIR — RHENUS LOGISTICS — SCHROLL —  
SITA — TIMKEN



## TESTIMONIAL



OLIVIER WEYMAN  
Director of  
Environmental  
Strategy, Soprema

“Soprema is a trailblazer at the Port of Strasbourg! We began our industrial operations when we set up here in 1970. Almost 50 years later, we still find what we came here for – proximity to Germany, multimodal solutions and business partners who share our view of the industry. But today, we find a whole lot more too – a host of outstanding specialist networks and real community initiatives. At Soprema, we are investing energy and resources in the circular economy and industrial ecology. Beyond the infrastructures and services, the Port of Strasbourg is home to many others who are making the same commitments. New economic models are coming to life, built on solidarity and exchanges of skills across a range of disciplines.”







# LIVING IN STRASBOURG



## EUROPTIMISM

N. (FROM THE LATIN OPTIMUS, BEST)

QUALIFIER SPECIFIC TO THE CITY OF STRASBOURG. DEFINITION 1. MINDSET OF THE CITY AND ITS INHABITANTS THAT ENCOURAGES A POSITIVE OUTLOOK. DEFINITION 2. DISPOSITION THAT STIMULATES ACTION AND EXPERIMENTATION WITH A VIEW TO DEVELOPING NEW RESOURCES.

20/21



Historically European and resolutely optimistic, Strasbourg cultivates a renewable energy that grows the more it is shared! This energy constitutes a personal and collective force that makes Strasbourg a city that is:

## ATTRACTIVE

Because it is pleasant. It's a great place to work – ask anyone who works here!

Because it is enterprising. The headquarters of major international corporations stand alongside family businesses.

Because it is active. The labour market is stable and the Eurométropole is committed to creating 27,000 new jobs by 2030.

Because it is prosperous. Industries here are thriving and represent 30% of economic activity.



## ECOLOGICAL

Because it is No.1 for soft mobility. Strasbourg is France's leading city for cycling and public transport networks.

Because it is natural. 344 hectares of parks and gardens give the city a green heart.

Because it is clean. The people of Strasbourg have recycled for many years and now compost too!



## COSMOPOLITAN

Because it is decidedly European. Debate is a way of life in Strasbourg, dubbed the cradle of Humanism, and home to the European Parliament, the European Court of Human Rights and the Council of Europe.

Because it is welcoming. Students of 150 nationalities intermingle at the University.

Because it is a crossroads. Over 1,000 destinations lie within two hours of Strasbourg.

Because it crosses borders. With bridges over the Rhine uniting Strasbourg to Germany, the border ties far more than it separates.

Because it speaks many tongues. Strasbourg's young scholars learn German, English and many other languages from an early age.

## EXPERIMENTAL

Because it breaks new ground. With its skilled researchers and hi-tech laboratories, Strasbourg inspires today's brains and nurtures tomorrow's talent.

Because it wins awards. Four Nobel prize winners still hard at work give the city a strong scientific stimulus.

Because it looks to the future. The Euro-métropole has four competitiveness clusters where research meets business to shape tomorrow's economy.



"PORT CITY OR URBAN PORT? This is not an issue. Strasbourg, a city of overland and river links, is firmly attached to its port. Since the Middle Ages, the port has shaped the city's contours, marked its history and forged its European destiny. Located between Flanders and Italy, the city was formerly at the heart of humanist movements and attracted scientists and artists. Today our warm, welcoming city is open to the world. Eight local personalities – our Chief Optimist Officers – are the embodiment of this genuinely optimistic mindset. As the river has flooded Strasbourg with great ideas, these men and women transmit the values of a multi-faceted city and fuel the desire to undertake great things here."

CATHERINE TRAUTMANN,  
Chair, Port of Strasbourg



## WELCOMING

Because it focuses on people. Strasbourg has created "Résoptimist", a network of people willing to share their own personal knowledge and vision of the city and welcome newcomers.

Because it is diplomatic. With 95 embassies, consulates and permanent representations to the Council of Europe, Strasbourg is France's second diplomatic city, ready to embrace its future inhabitants from all over the world.



CONTACT



WWW.STRASBOURG.PORT.FR

25 rue de la Nuée Bleue — CS 80407  
67002 Strasbourg Cedex - France  
Ph. : +33(0)3 88 21 74 74  
pas@strasbourg.port.fr

PAS

PORT AUTONOME DE STRASBOURG